

# J.BURROWS

• • • • •

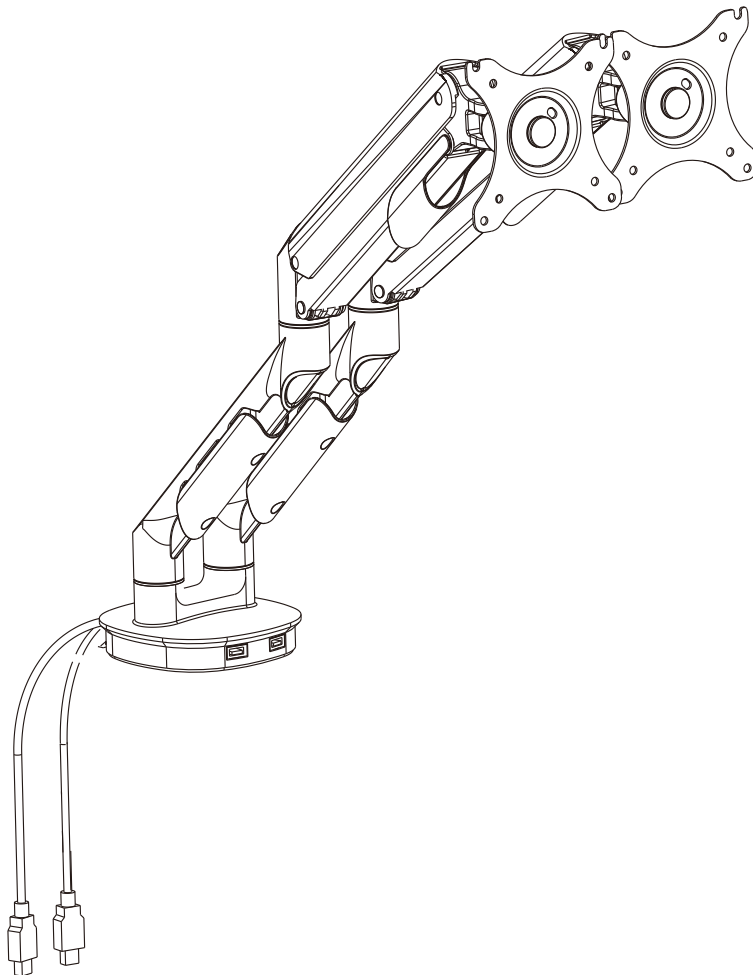
## ASSEMBLY INSTRUCTIONS

---

### PROFESSIONAL SINGLE MONITOR ARM

JBPDMARMWE

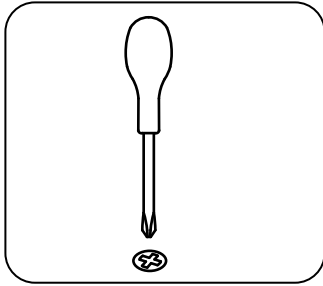
JBPDMARMBK



This design and instruction booklet is subject to copyright.  
[www.officeworks.com.au](http://www.officeworks.com.au)

1CTN

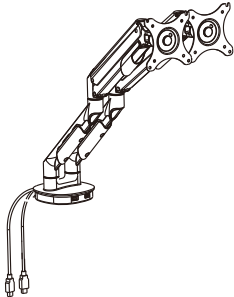
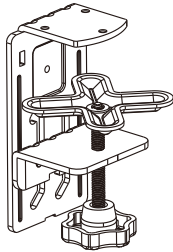

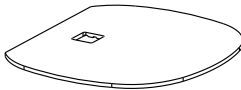

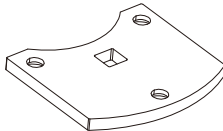


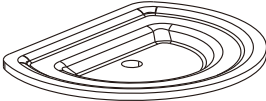
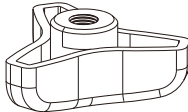
## Tools required for assembly





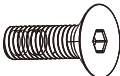




## WARNING

- Please check you have all hardware before assembling.
- If you think you are missing any hardware, please contact the store of purchase.
- Please ensure you have the name of the item and hardware part required and quantity.
- Please retain your receipt for proof of purchase to validate warranty. Enjoy your new purchase.
- Do not use this arm unless all bolts, screws and knobs are firmly secured.
- At least every 4 months, check all bolts, screws and knobs to be sure they are tight.
- If parts are missing, broken, damaged or worn, stop using the product until repairs are made, using factory authorised parts.
- Failure to follow these warnings could result in serious injury.

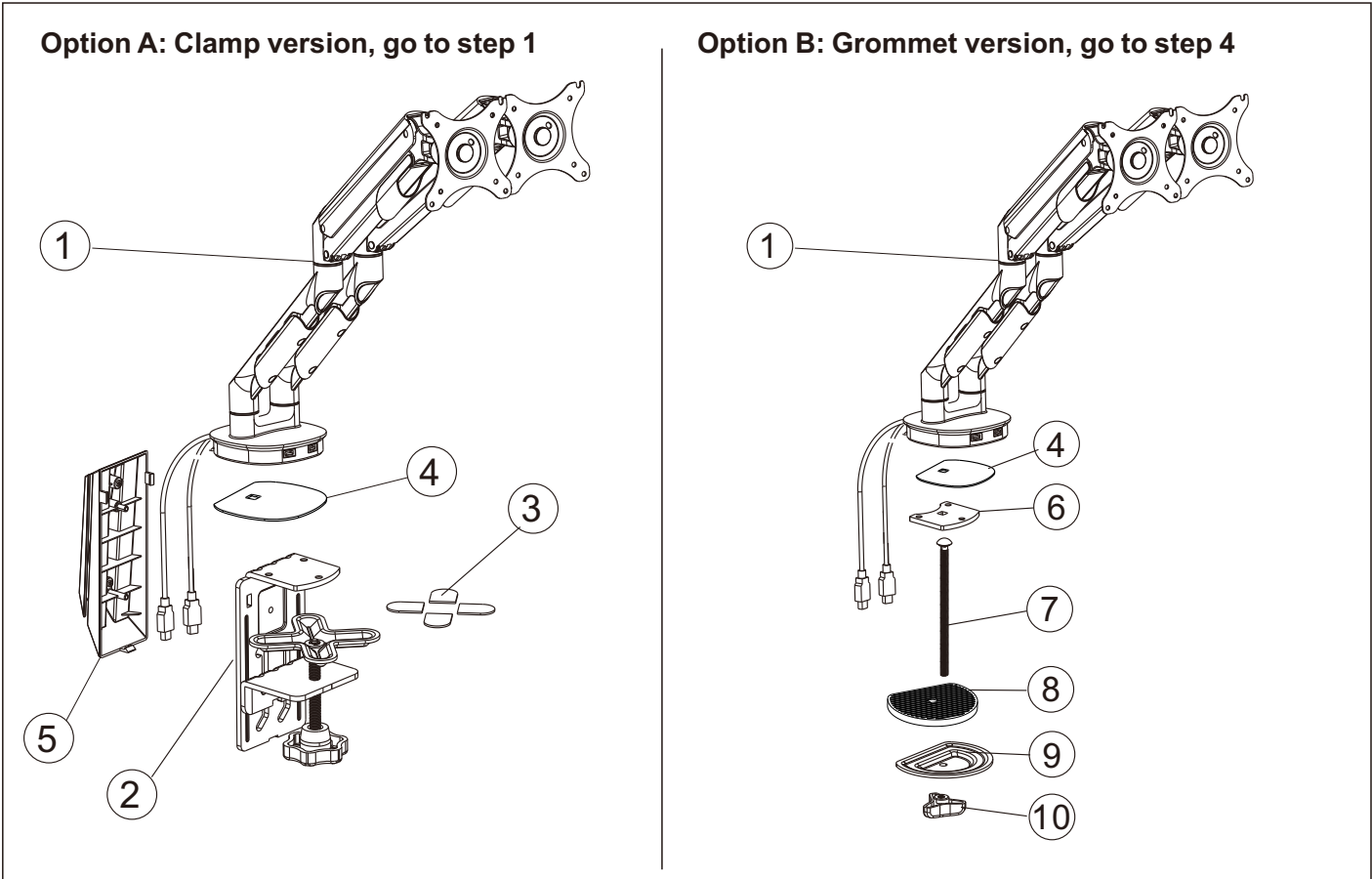
# PARTS LIST

<p>1</p>  <p>1pc</p>	<p>2</p>  <p>1pc</p>
<p>3</p>  <p>1pc</p>	<p>4</p>  <p>1pc</p>
<p>5</p>  <p>1pc</p>	<p>6</p>  <p>1pc</p>
<p>7</p>  <p>1pc</p>	<p>8</p>  <p>1pc</p>
<p>9</p>  <p>1pc</p>	<p>10</p>  <p>1pc</p>

# HARDWARE LIST

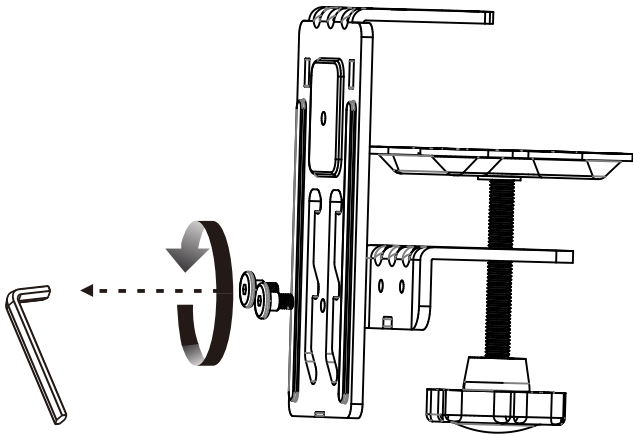
<b>A</b>  8pcs M4*12mm screw	<b>B</b>  8pcs M5*12mm screw	<b>C</b>  3pcs M6*12mm screw	<b>D</b>  16pcs Ø6.5*Ø13*2 washer
<b>E</b>  1pc M6 Box wrench	<b>F</b>  1pc 4X4 Allen key	<b>G</b>  1pc 5x5 Allen key	

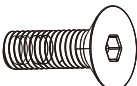

# INSTALLATION DIAGRAM



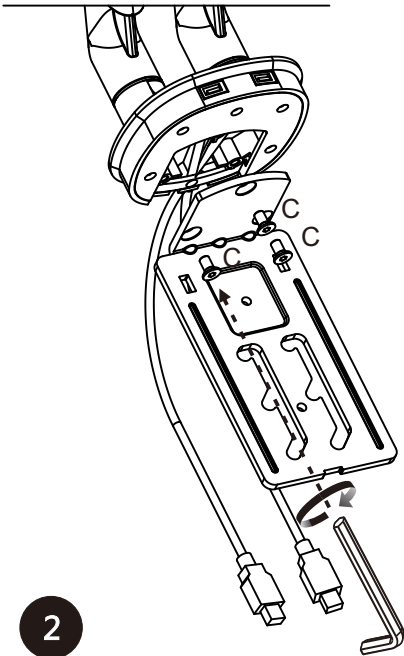
Option A: Clamp

STEP1

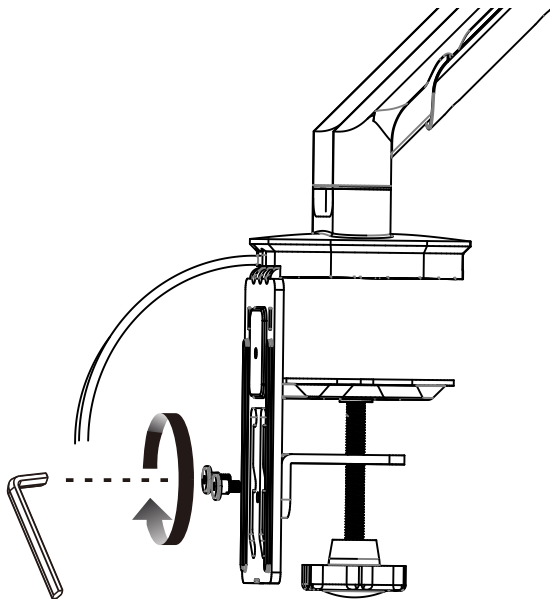


C	
	
3pcs	M6*12mm screw
F	
	
1pcs	4X4 Allen key

1

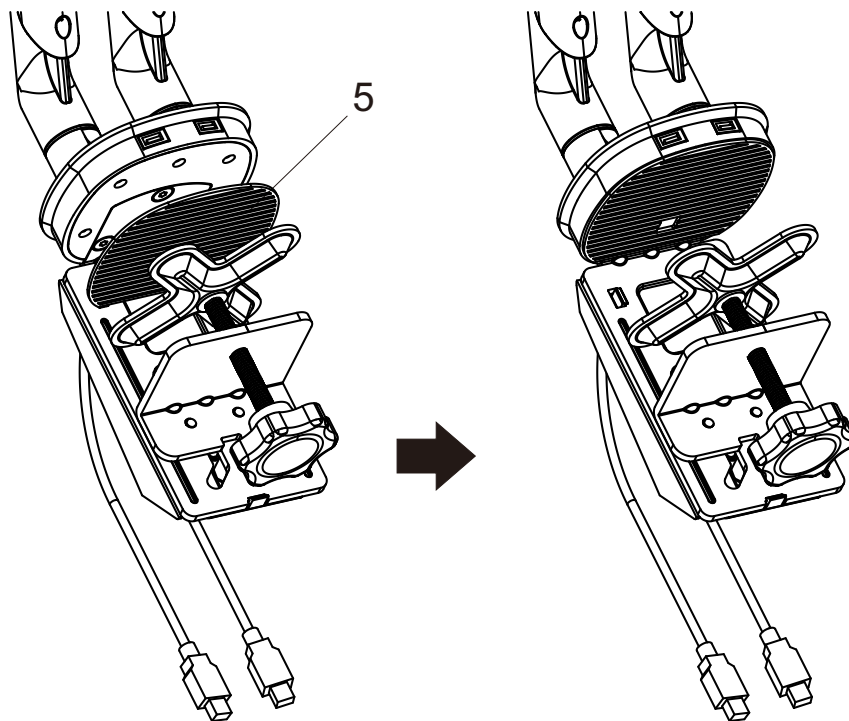


2



3

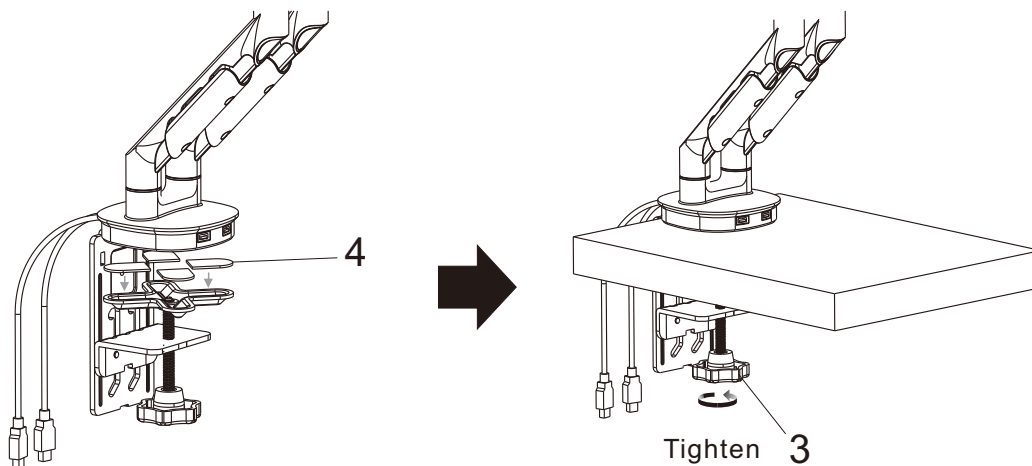
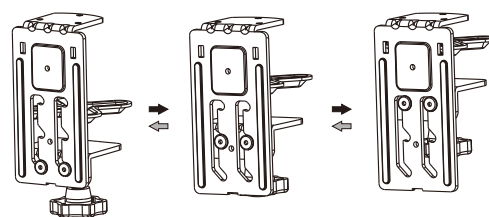
## STEP2



## STEP3

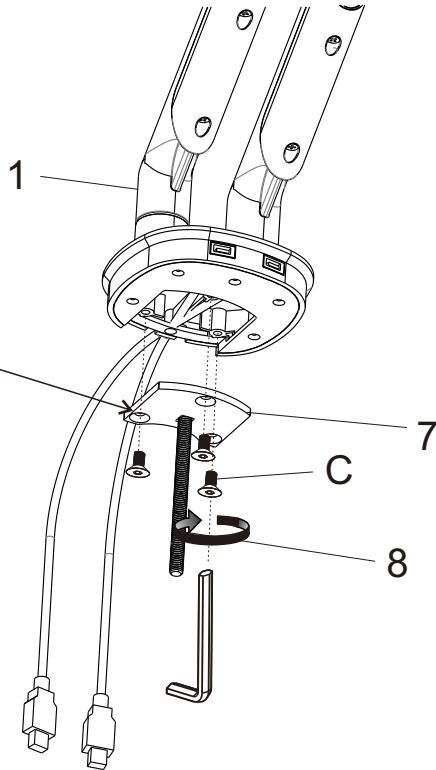
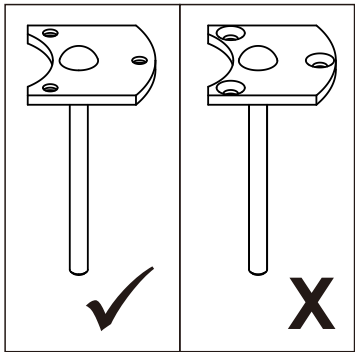
For desk thickness:  
25-100mm

Select position  
according to  
thickness of the desk

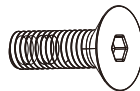


Option B: Grommet

STEP4



C



3pcs

M6\*12mm screw

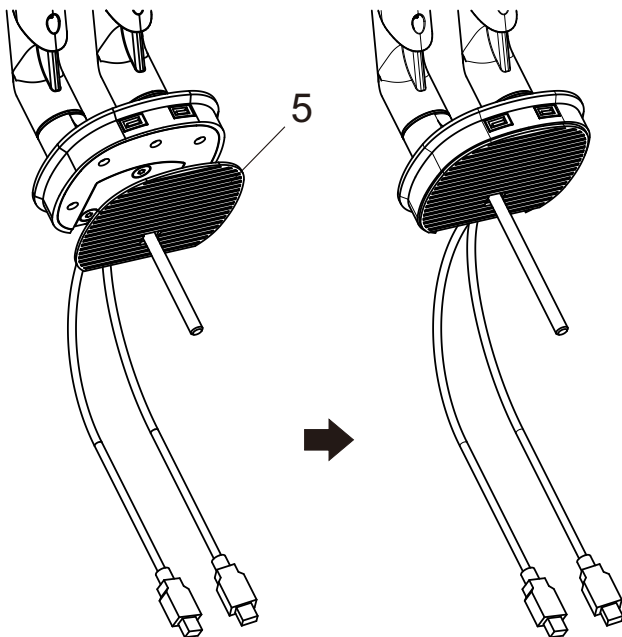
F



1pcs

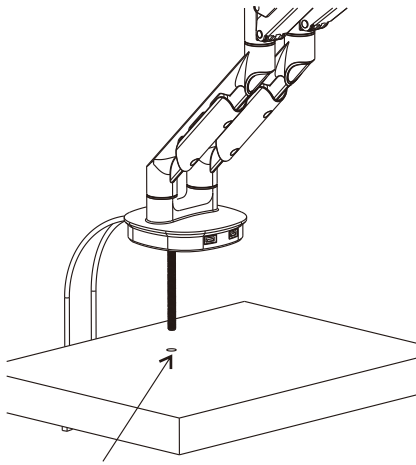
4X4 Allen key

STEP5

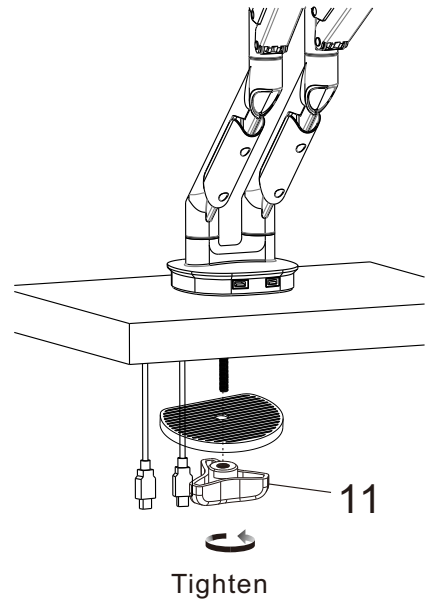
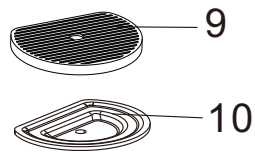


## STEP 6

For desk thickness:  
25-100mm

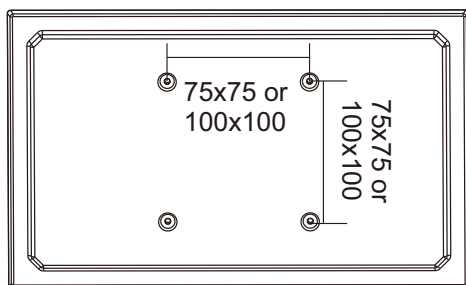


Available hole size:  
8.5-25mm

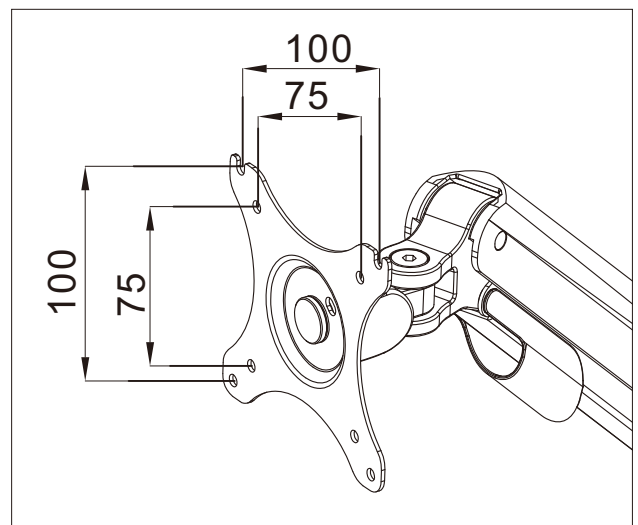


## STEP 7

Compatible with the monitor hole distance



VESA ON MONITOR





## STEP 8

Attaching the monitor to the plate

A



8pcs

M4\*12mm screw

B



8pcs

M5\*12mm screw

D



16pcs

Ø6.5\*Ø13\*2 washer

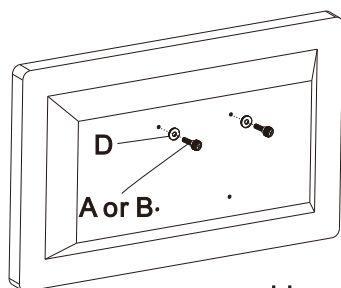
G



1pc

5x5 Allen key

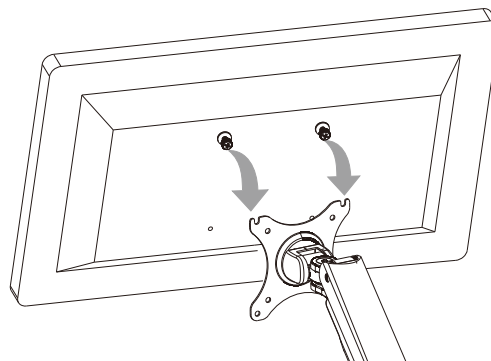
1



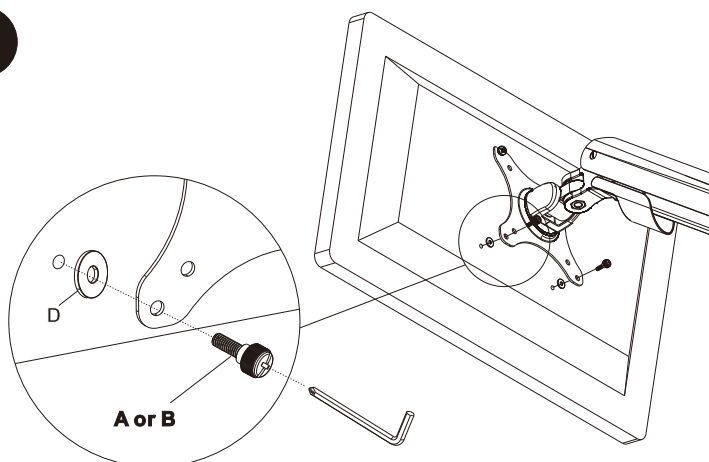
Use washer  
if needed (D)

A or B

2

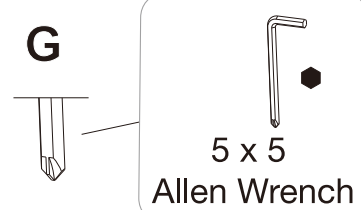


3



A or B

G



5 x 5  
Allen Wrench

## STEP9

Adjust the monitor

E



1pc

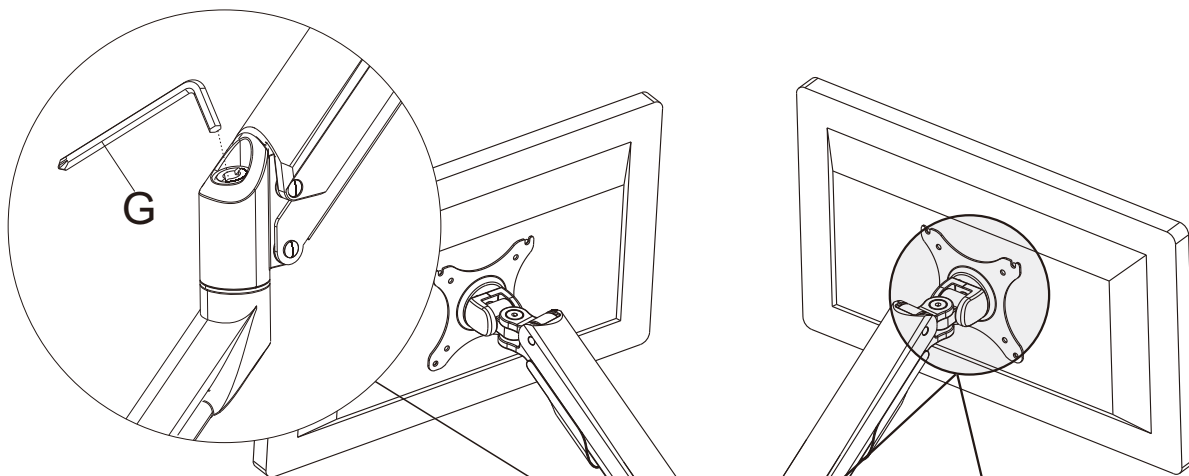
M6 Box wrench

G

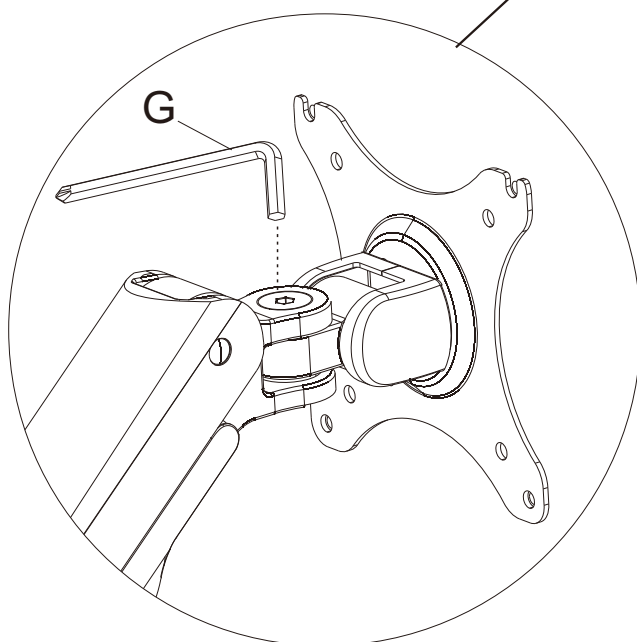


1pc

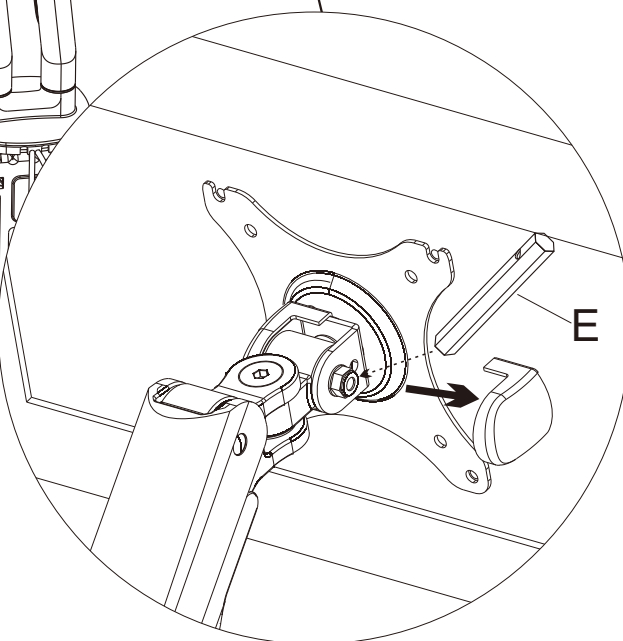
5x5 Allen key



⚠ If the monitor cannot stop at any height, use 5x5 allen key (G) to adjust the screw on the arm. Adjust the screw in “-” direction when the monitor is up and “+” direction when it is down. Factory setting: 4-5KG



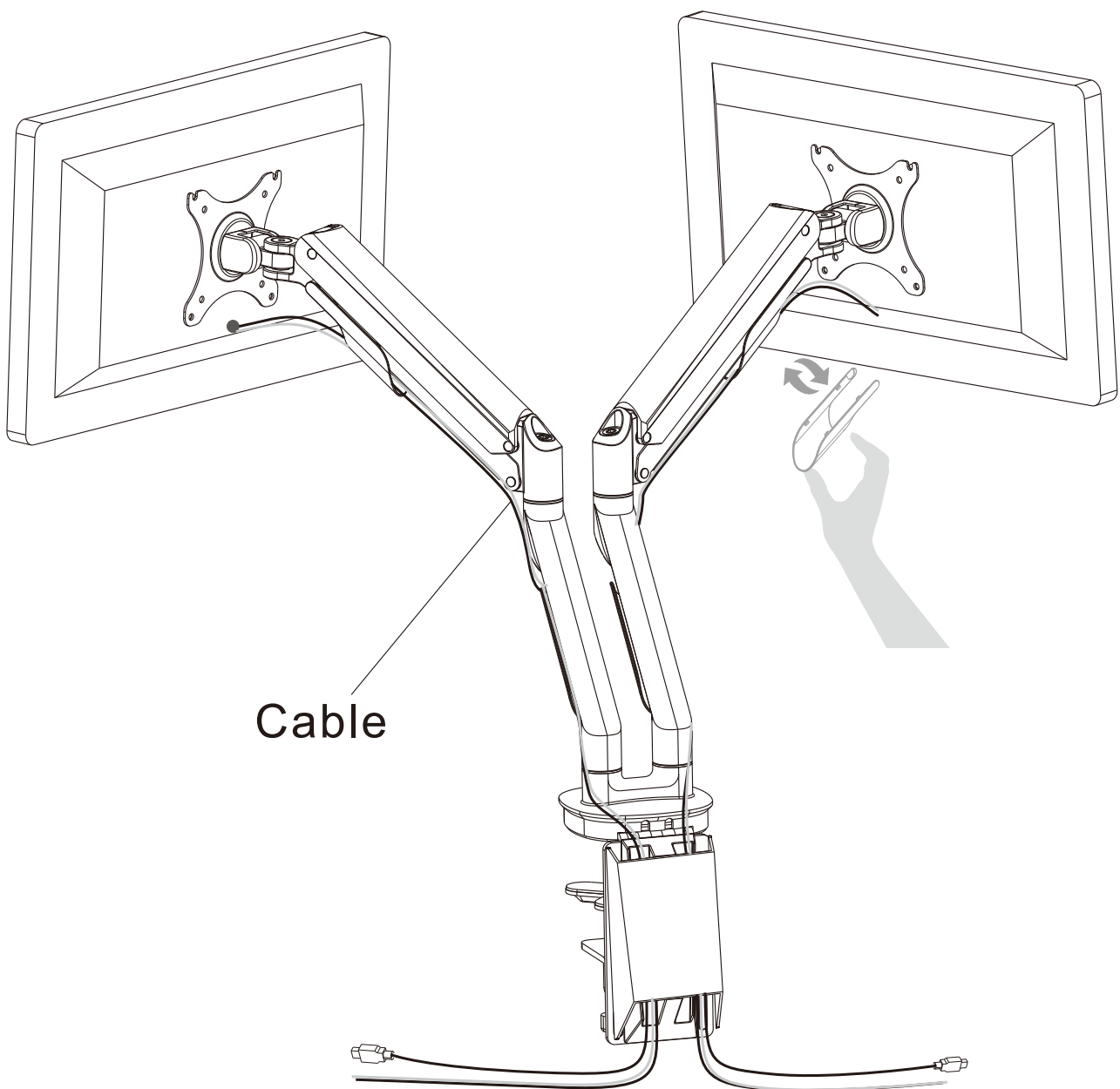
Use Allen Key (G) to adjust the swivel function



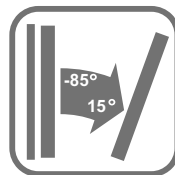
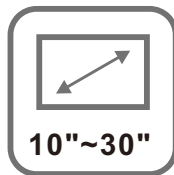
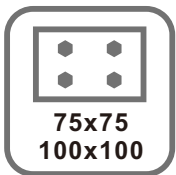
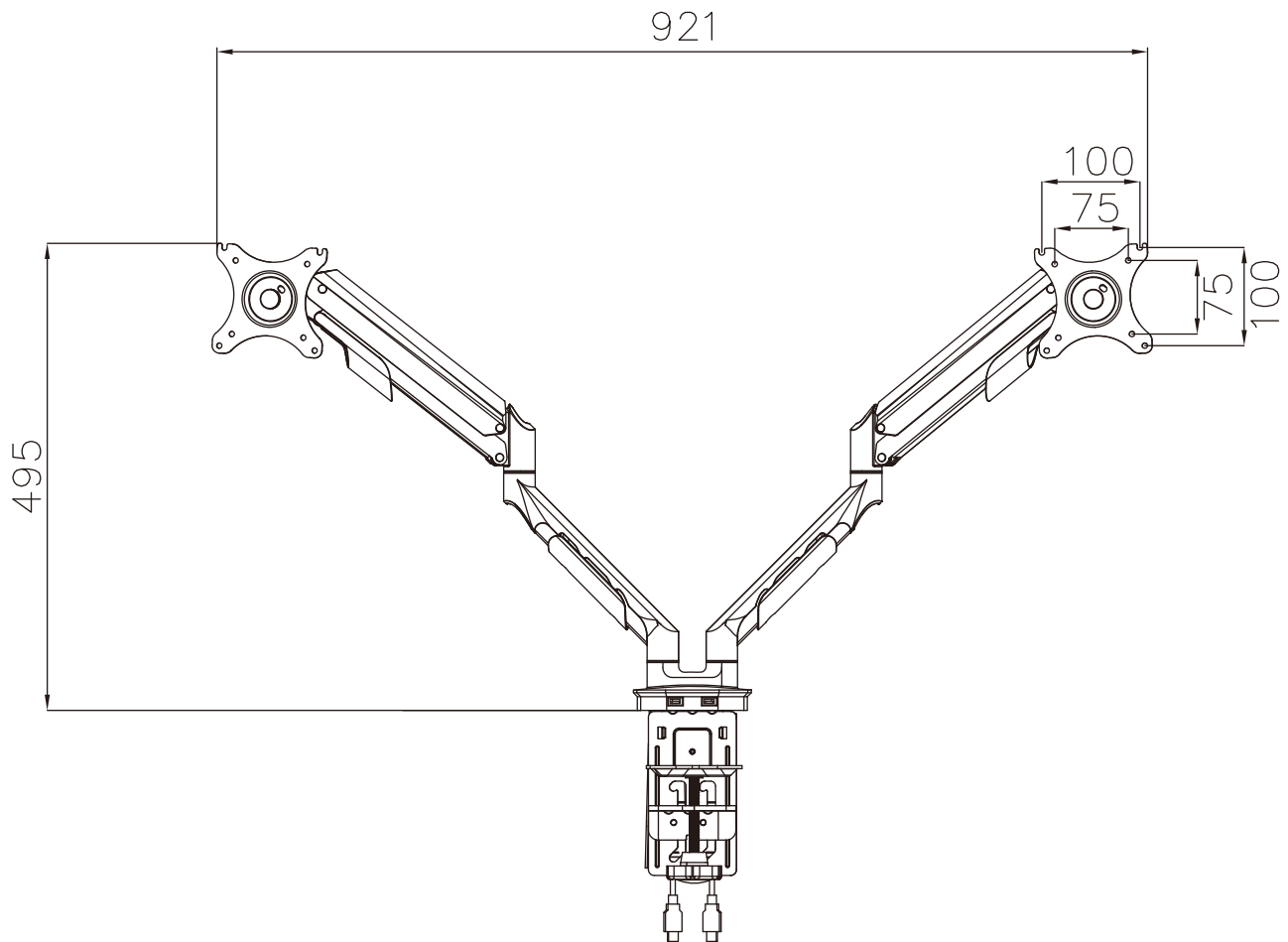
Remove the plastic cover, use Box wrench (E) to adjust the tilt function

## STEP10

### Using cord management



# MAXIMUM WEIGHT CAPACITY



**CAUTION:** This product is intended to hold the maximum weight indicated. Exceeding the maximum weight will result in instability and may cause injury.

Thank you for purchasing our product!

Please retain your receipt to validate warranty. If you'd like to know more about Officeworks' furniture products, please visit our website. [www.officeworks.com.au](http://www.officeworks.com.au)